

Overview

纲要

With the development of technology and society, people's living standards are improving unceasingly, they need more reliable, secure, uninterrupted power supply that many of them use dual power supply.

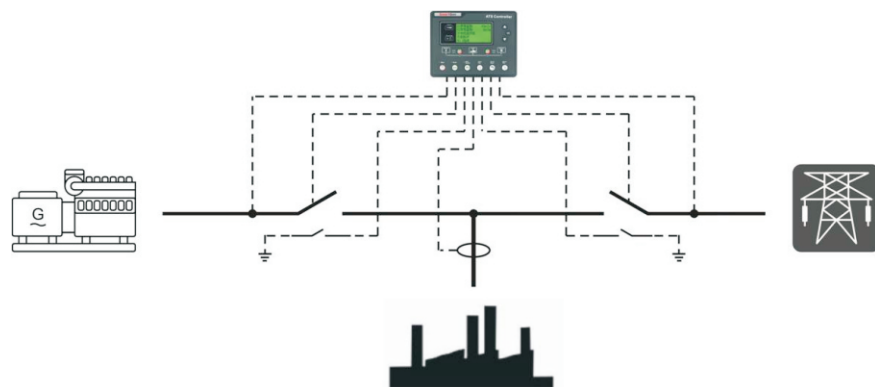
随着科技的进步和社会的发展，人们的生活水平不断地提高，各行业对供电的可靠性、安全性、连续性提出了越来越高的要求，很多场合需要采用两路电源来保证供电的可靠性和连续性。

Under this situation, SmartGen provide high-quality products for reliable, continuous power supply to solve this issue.

SmartGen能够很好地解决上述问题，为可靠、连续地供电提供强有力的保证。

Application

应用方案



Automatic Transfer Switch (ATS)
双电源自动切换

Characteristics

产品特点



HAT361/HAT361C/HAT363/HAT363C

Characteristics:

1. With MCU intelligent and precise monitoring and control;
2. With OFF mode, in which breaker close/open is inactive;
3. Suit for two-breaking, one-breaking, no-breaking switch;
4. S1 master, S2 master can be set, auto transfer/restore, auto transfer, non-restore switch of master power is fitted;
5. ATS can be configured to work through master and backup power supply, it can work normally as long as any power supply is normal;
6. With RS485 isolated communication port (option), enables "remote control remote measuring, remote communication, remote adjusting" function; ATS close/open can be controlled remotely;
7. Manual test is fitted, which can conduct genset start/stop.

特点：

1. 具有MCU智能精准监测和控制；
2. 具有OFF模式，该模式控制器合分闸无效；
3. 可适用于两个分断位、一个分断位、无分断位开关；
4. 可设置S1主用、S2主用，具有对主用电源自投自复、自投不自复切换方式；
5. 可设置ATS通过主备电源供电，只要有任意一路供电电源正常，ATS即可正常工作；
6. 设有RS485隔离型通讯接口（选配），具有“四遥”功能，遥控ATS合分闸；
7. 可手动试机，进行发电机组的开停机操作。



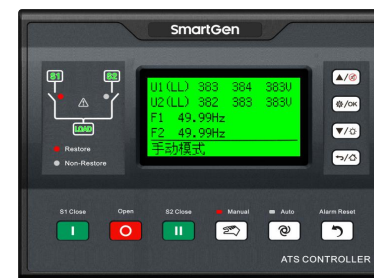
HAT560NC/HAT560NBC

Characteristics:

1. Applicable for PC, CB, CC class switch;
2. With 5-way outputs (2-way fixed output+ 3-way programmable output), 4-way inputs (2-way fixed input + 2-way programmable input);
3. With AC(170-277)V function (only for HAT560NBC);
4. LINK, RS485 communication port that enables “remote control, remote measuring, remote communication” function;
5. With real-time clock (RTC) display and event log function, which can record 50 items circularly;
6. Can control two gensets to work cyclically, genset running time and interval stop time can be set;
7. Scheduled genset start/stop function: running for once/monthly/weekly and running with load or without load can also be configured.

特点：

1. 适用于PC级、CB级、CC级开关；
2. 5路输出口（2路固定+3路可编程），4路输入（2路固定+2路可编程）；
3. 具有交流供电AC(170-277)V功能(仅HAT560NBC)；
4. 具有LINK、RS485通讯接口，具有“三遥”功能；
5. 实时时钟显示，具有历史记录功能，可循环记录50条数据；
6. 可控制两台发电机组循环运行，且发电机组运行时间及间隔停机时间均可设置；
7. 具有定时开停发电机组功能，可设定单次运行、每月一次或者每周一次，且均可设定是否带载运行。



HAT600P/HAT600PI/HAT600PB/HAT600PBI/HAT600PS

1. Independent overcurrent warning or trip alarm functions for S1/S2 (only for HAT600PI, HAT600PBI, HAT600PS);
2. With 4-way programmable inputs, 6-way programmable outputs;
3. RS485 port can remote control genset start/stop, ATS close and open;
4. ETHERNET port can remote control genset start/stop, ATS close and open (only for HAT600PBI, HAT600PS);
5. HAT600PS has electrical interlock release function that can realize synchronous transfer of dual power;
6. With NEL trip function (only for HAT600PI, HAT600PBI, HAT600PS);
7. With local mode, the controller only displays data parameter when it is active and the switch needs to be transferred by external operations;
8. Real time clock display, and event log function, which can record 200 data circularly;
9. Two gensets can be controlled to realize cycle run, master run, and balanced time run;
10. Scheduled run/not run function for genset is fitted;
11. Each phase voltage of S1/S2, wave distortion rate of load current and 3-21 odd times harmonic percentage can be measured;
12. With black box function.

1. 具有S1/S2独立过流警告或跳闸报警功能(仅HAT600PI、HAT600PBI、HAT600PS)；
2. 4路可编程输入，6路可编程输出；
3. 具有RS485接口，可遥控发电机组开、停机，开关合分闸；
4. 具有ETHERNET接口，可遥控发电机组开、停机，开关合分闸(仅HAT600PBI、HAT600PS)；
5. HAT600PS可解除电气互锁，实现两路电源的同步切换；
6. 具有非重要负载NEL跳闸功能(仅HAT600PI、HAT600PBI、HAT600PS)；
7. 具有就地模式，此模式有效时，控制器仅显示数据参数，开关需要通过外部操作转换；
8. 实时时钟显示，具有历史记录功能，可循环记录200条数据；
9. 可控制两台发电机组，实现循环运行、主用运行、均衡时间运行；
10. 具有对发电机组的定时巡检开机/定时不开机功能；
11. 可测量 S1、S2 分相电压以及负载电流的波形畸变率和 3-21 奇数次谐波分量百分比；
12. 具有黑匣子功能。



HAT820/HAT820S

Characteristics:

1. 4.3-inch LCD display, multiple language switching;
2. Auto transfer/restore and auto transfer non-restore switching via keys is fitted;
3. Independent overcurrent warning and trip alarm functions for S1 and S2;
4. 2 ways of RS485 communication ports can remote control genset start, stop, breaker close and open;
5. HAT820S has electrical interlock release function that can realize synchronous transfer of dual power;
6. With NEL trip function;
7. With local mode, the controller only displays data parameter when it is active and the switch needs to be transferred by external operations;
8. Real time clock display, and event log function, which can record 200 data circularly;
9. With black box function that can record 5 sets of events of ATS transfer;
10. Two gensets can be controlled to realize cycle run, master run, and balanced time run;
11. 9-way programmable inputs, 12-way programmable outputs can meet diverse function needs;
12. Scheduled run/ not run function for genset; it can be set to run for once, monthly, or weekly, and running with loading or not can also be set;
13. Resistance type temperature sensor PT100 can be externally connected, which can detect cabinet temperature and control fan start and stop.

特点：

1. 4.3寸液晶显示，支持多种语言切换；
2. 按键切换自投自复与自投不自复；
3. 具有S1/S2独立过流警告或跳闸报警功能；
4. 双路RS485通讯接口，可遥控发电机组开、停机，遥控开关合分闸；
5. HAT820S可解除电气互锁，实现两路电源的同步切换；
6. 具有非重要负载NEL跳闸功能；
7. 具有就地模式，此模式有效时，控制器仅显示数据参数，开关需要通过外部操作转换；
8. 实时时钟显示，具有历史记录功能，可循环记录200条数据；
9. 具有黑匣子功能，可循环记录5组ATS自动切换时的事件；
10. 可控制两台发电机组，实现循环运行、主用运行、均衡时间运行；
11. 9路可编程输入，12路可编程输出，满足多样化功能需求；
12. 具有对发电机组的定时巡检开机/定时不开机功能，可设定单次运行、每月或者每周运行，且均可设定是否带载运行；
13. 可外接电阻型温度传感器PT100，对柜内温度进行检测，控制风机起停。