

SmartGen

MAKING CONTROL SMARTER

SG72A COMMUNICATION MODULES

USER MANUAL



郑州众智科技股份有限公司
SMARTGEN(ZHENGZHOU)TECHNOLOGY CO.,LTD.

No. 28 Xuemei Street, Zhengzhou, Henan, China

Tel: +86-371-67988888/67981888/67992951

+86-371-67981000 (overseas)

Fax: +86-371-67992952

Web: www.smartgen.com.cn/

www.smartgen.cn/

Email: sales@smartgen.cn

All rights reserved. No part of this publication may be reproduced in any material form (including photocopying or storing in any medium by electronic means or other) without the written permission of the copyright holder.




Smartgen reserves the right to change the contents of this document without prior notice.

Table 1 Software Version

Date	Version	Content
2014-10-24	1.0	Original release.
2024-12-16	1.1	Update the logo of SmartGen and the information of company.

This manual is suitable for SG72A communication module only.

Table 2 - Symbol Instruction

Sign	Instruction
 NOTE	Highlights an essential element of a procedure to ensure correctness.
 CAUTION!	Indicates a procedure or practice, which, if not strictly observed, could result in damage or destruction of equipment.
 WARNING!	Indicates a procedure or practice, which could result in injury to personnel or loss of life if not followed correctly.

CONTENTS

1	OVERVIEW.....	4
2	FUNCTION AND CASE DIMENSION.....	5
3	DRIVER INSTALLATION.....	6

SmartGen

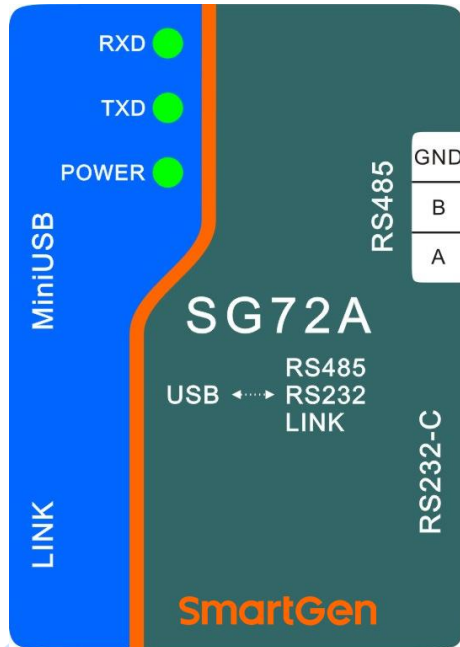
1 OVERVIEW

SG72A module is a communication port conversion module which allows the conversion of USB<->RS232, USB<-> RS485, USB<->LINK (Smartgen special). It is power supplied by USB port of PC.

SmartGen

2 FUNCTION AND CASE DIMENSION

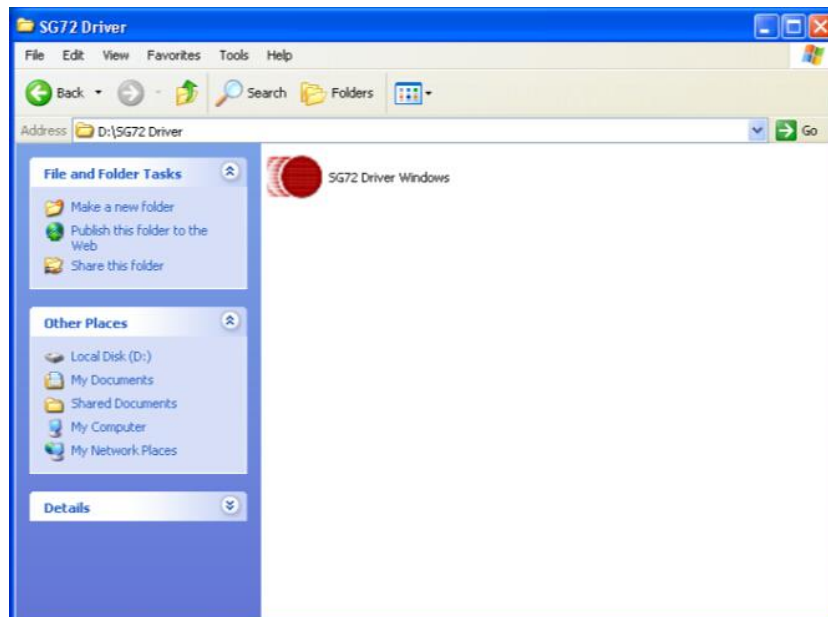
- 1 USB<->RS232;
- 2 USB<->RS485;
- 3 USB<->LINK (Smartgen special port, TTL level port)
- 4 Case dimension: 72mm*51mm*27mm (length *width*height)



No.	Description
RXD	Receive data indicator. It is flashing when the data is received successfully.
TXD	Send data indicator. It is flashing when the data is sent successfully.
POWER	Power supply indicator. SG72A module is power supplied by USB port and there is no need to connect external power supply. It is illuminated when the connection of USB port is normal.
MiniUSB	Standard USB port. Connect to USB port.
LINK	Smartgen special port. Communicate with controller which produced by Smartgen.
RS485	Standard RS485 serial communication port
RS232-C	Standard RS232 serial communication port (9 pin)

3 DRIVER INSTALLATION

1. Do not connect SG72A to USB port before installation.
2. Find out the driver file that is provided by Smartgen, the file name is “SG72 Driver Windows.exe”.



Note: The driver is compatible with Windows 2000, Windows XP and Windows 7 only.

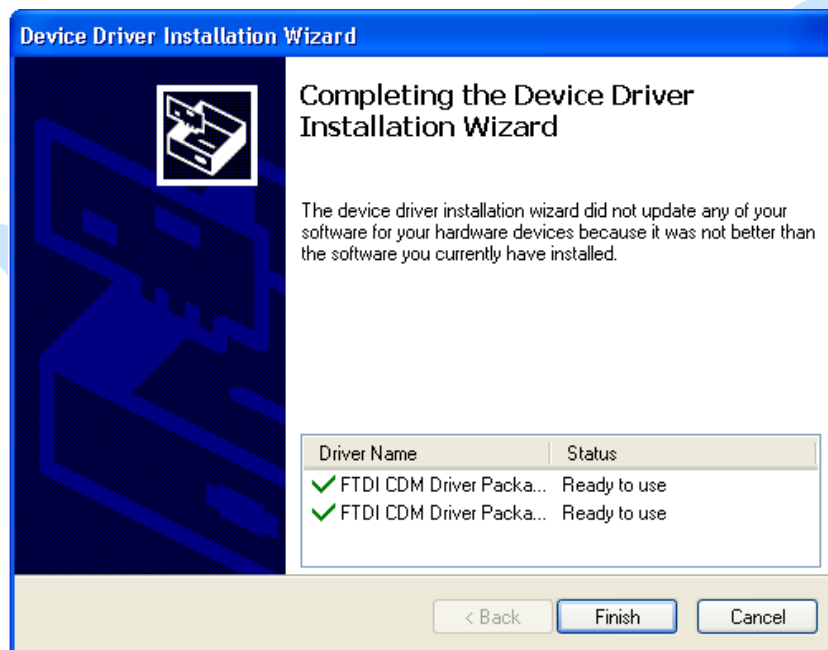
3. Connect the SG72A module to the PC via USB port. Double click the file to open it and then the screen should now display as follow:



4. Click the “Extract” button and the screen should now display as follow:

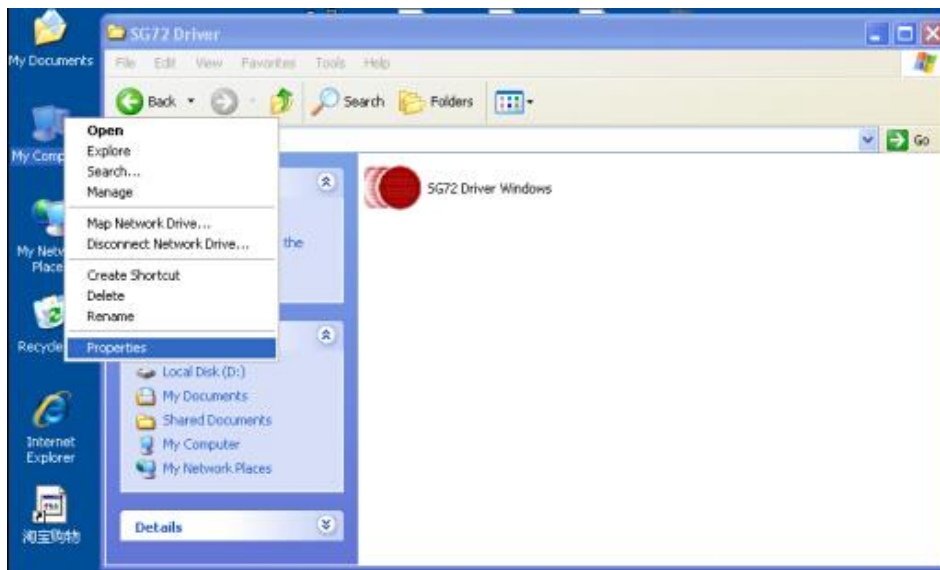


5. Click the "Next" button and the screen should now display as follow:



6. SG72A module driver installation was successful and "Finish" button should be clicked to confirm the installation.

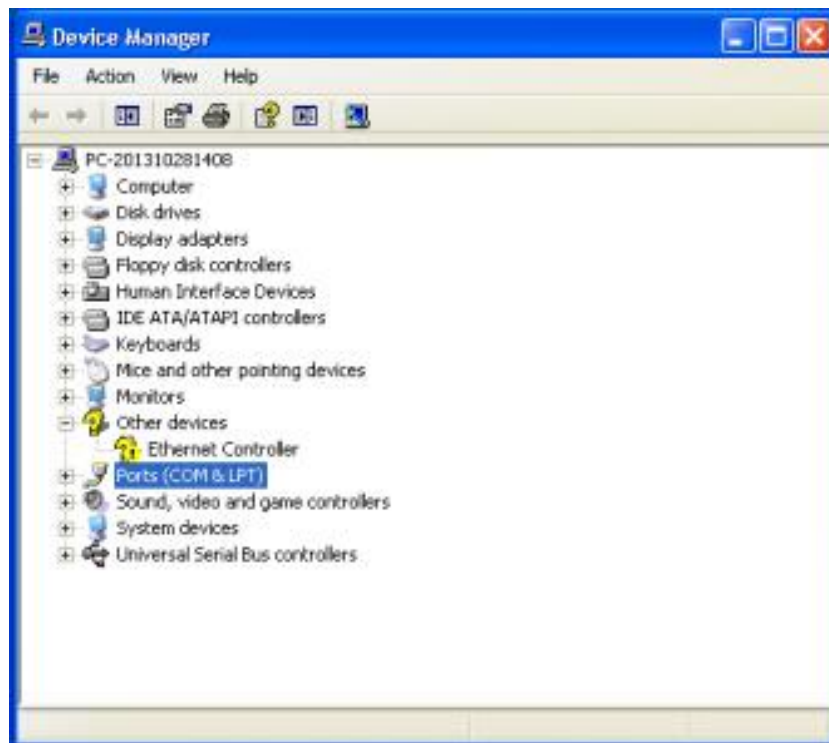
- After installation, on the desktop, right-click “My Computer” and then select “Properties”.



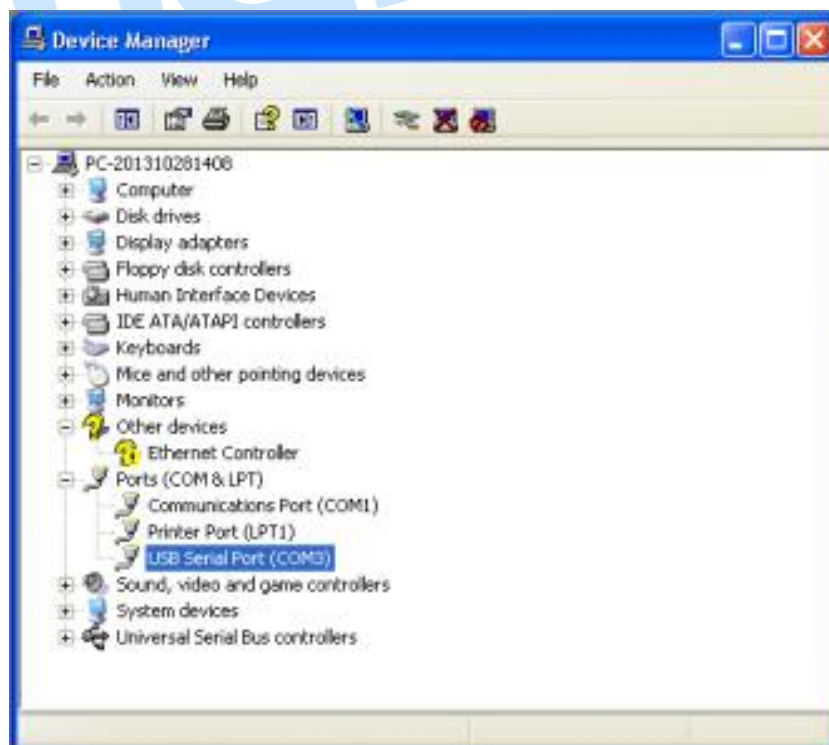
- Select “hardware” item in “system properties” dialog, and then click “device manger”.
The screen should now display as follow:



9. Click the “+” symbol before the “Ports (COM & LPT)”, The screen should now display as follow:



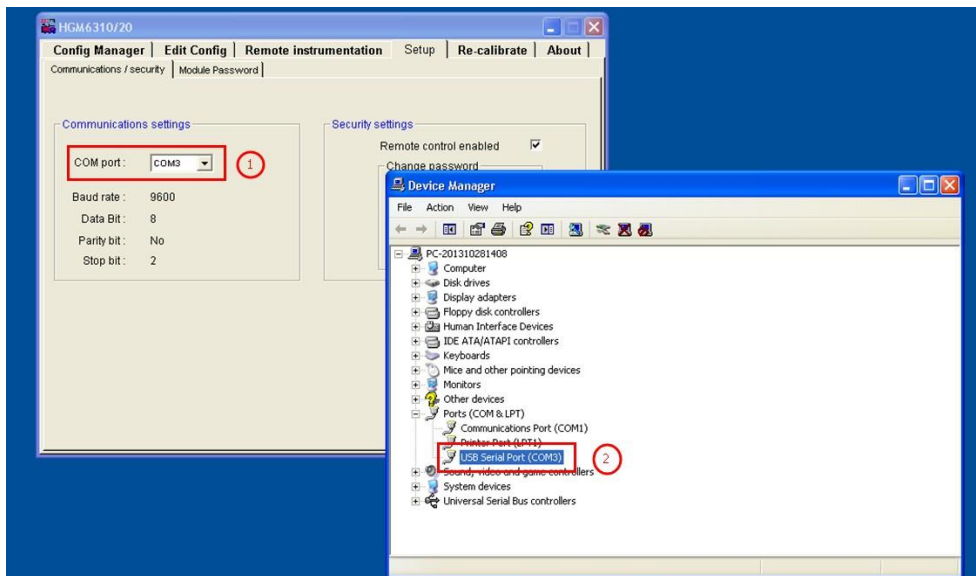
10. SG72A module is shown as “USB serial port (COM[x])” as it fits with USB communication port. Here is shown as COM3 (It will show different COM port according to different computer, e.g. COM4, COM5, COM6). The screen should now display as follow:



11. “USB serial port (COM3)” will disappear immediately if SG72A is disconnected with PC while appear

again if SG72A is connected with PC. This operation can help identify the generated COM port after the SG72 is connected.

For example: Here we take HGM6300 test software as example. In "Communication/Security", change the COM port as same as the generated COM port in device manager. The screen should now display as follow:



Make sure that the COM port of ① and ② are consistent.

▲NOTE:

1. If there is no "Found New Hardware" indication during installation, please check whether the USB port is normal. If it is normal, SG72A Power light is illuminated. Overload on USB port will cause that computer can not provide power for USB device. If above situation occurs, please change another USB port.
2. If new hardware installation wizard is shut down during installation, re-plug the USB device is OK.